



# Sustainable Groundwater Management Update

California Department of Water Resources

January 2023





# California's Groundwater Supports...





# Surface Water and Groundwater

For over 100 years, surface water has been actively managed in California

Sustainable groundwater management is a new statewide effort

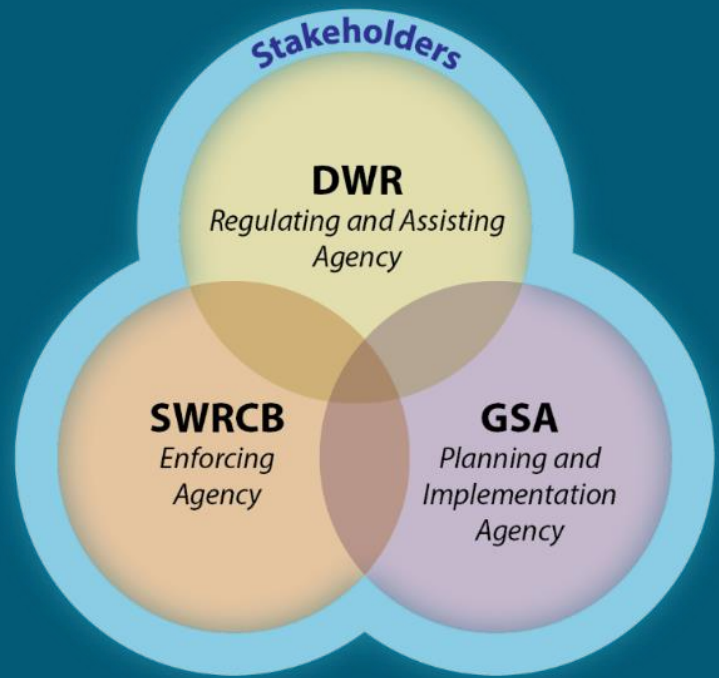


SGMA Timeline

- 2012** 2012-2016 Drought
- 2014** SGMA signed into law



SGMA Overview

Local Control



Sustainability

*Avoid Six Undesirable Results*

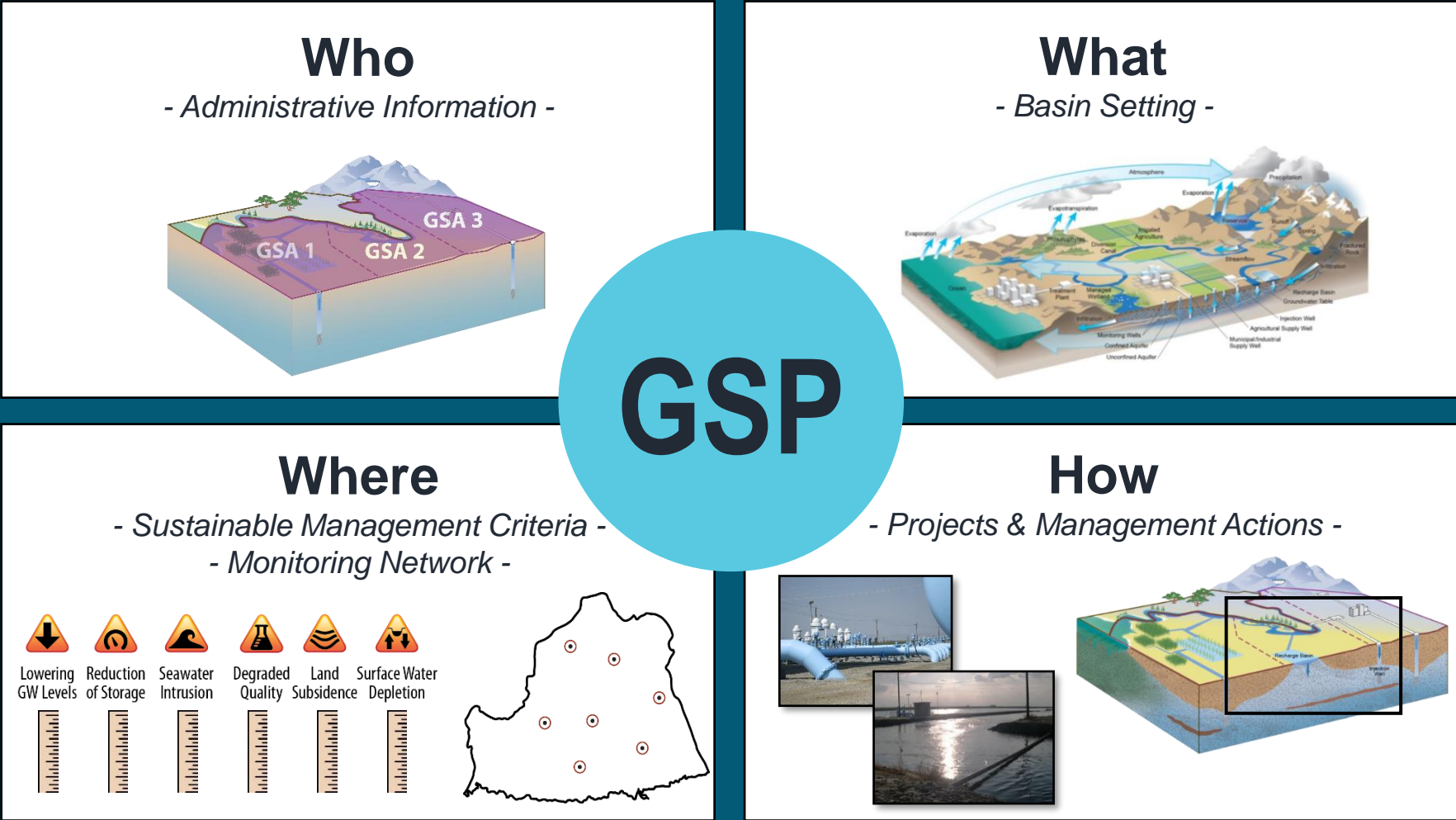
- |  |   |   |
|--|---|---|
| <br><i>Lowering of GW Levels</i>  | <br><i>Reduction of GW Storage</i> | <br><i>Seawater Intrusion</i>                  |
| <br><i>Degraded Water Quality</i> | <br><i>Land Subsidence</i>         | <br><i>Depletion of Interconnected Streams</i> |



SGMA Timeline

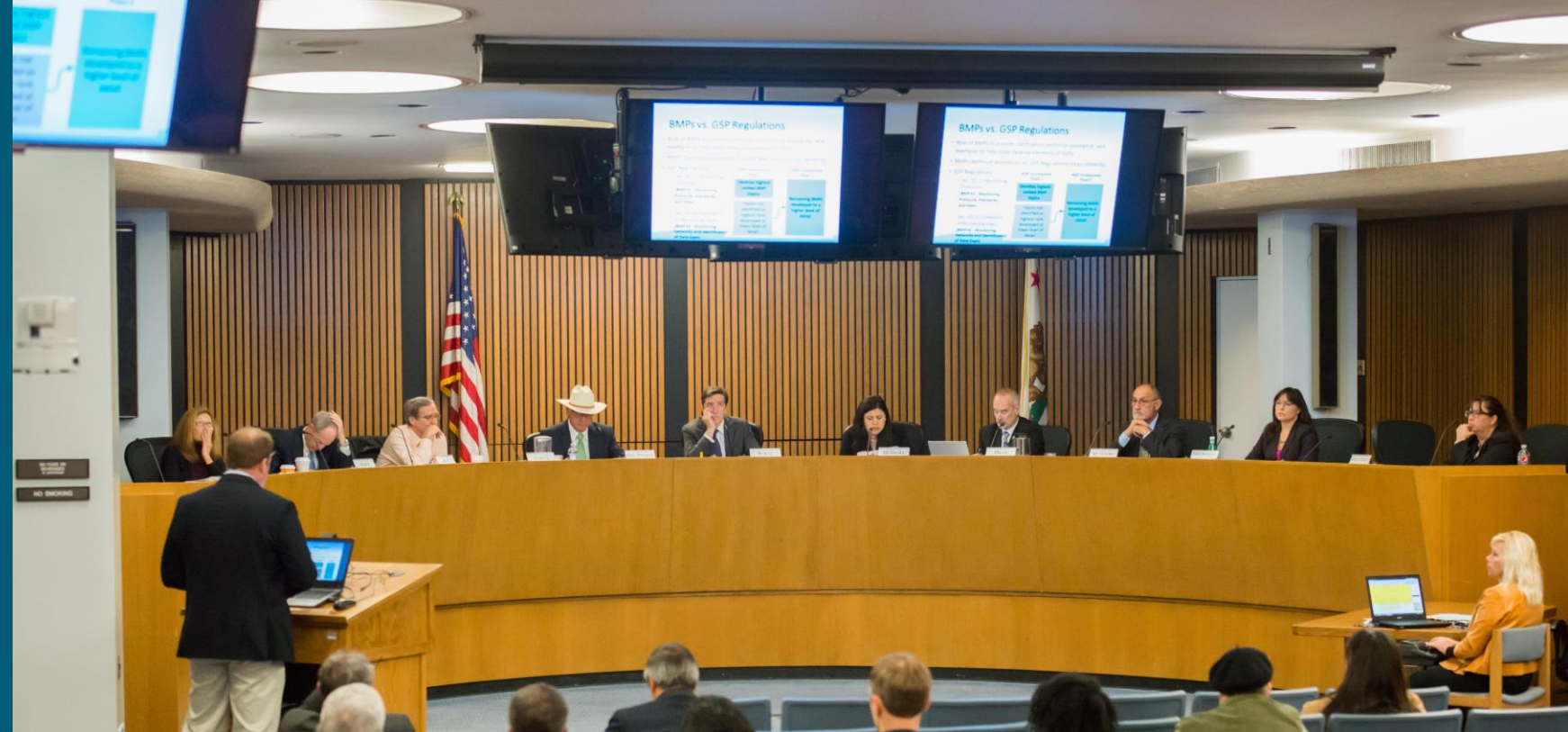
- 2012** 2012-2016 Drought
- 2014** SGMA signed into law

# Groundwater Sustainability Plans



# SGMA Timeline

- 2012** 2012-2016 Drought
- 2014** SGMA signed into law
- 2016** SGMA Rulemaking



## California Water Commission Approved Two Regulations



Basin Boundary Regulations  
(Oct. 2015)

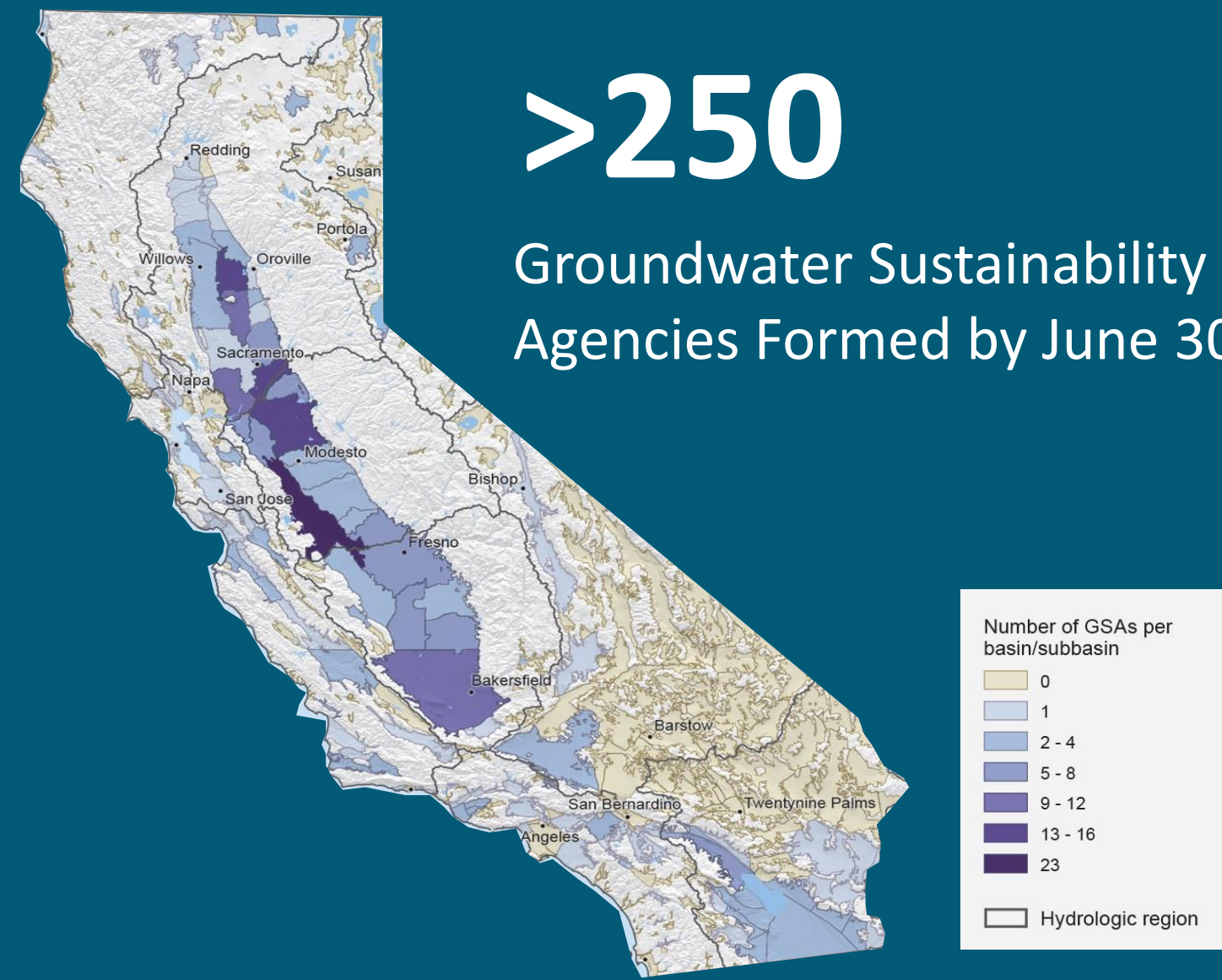


GSP Regulations  
(May 2016)

# SGMA Timeline

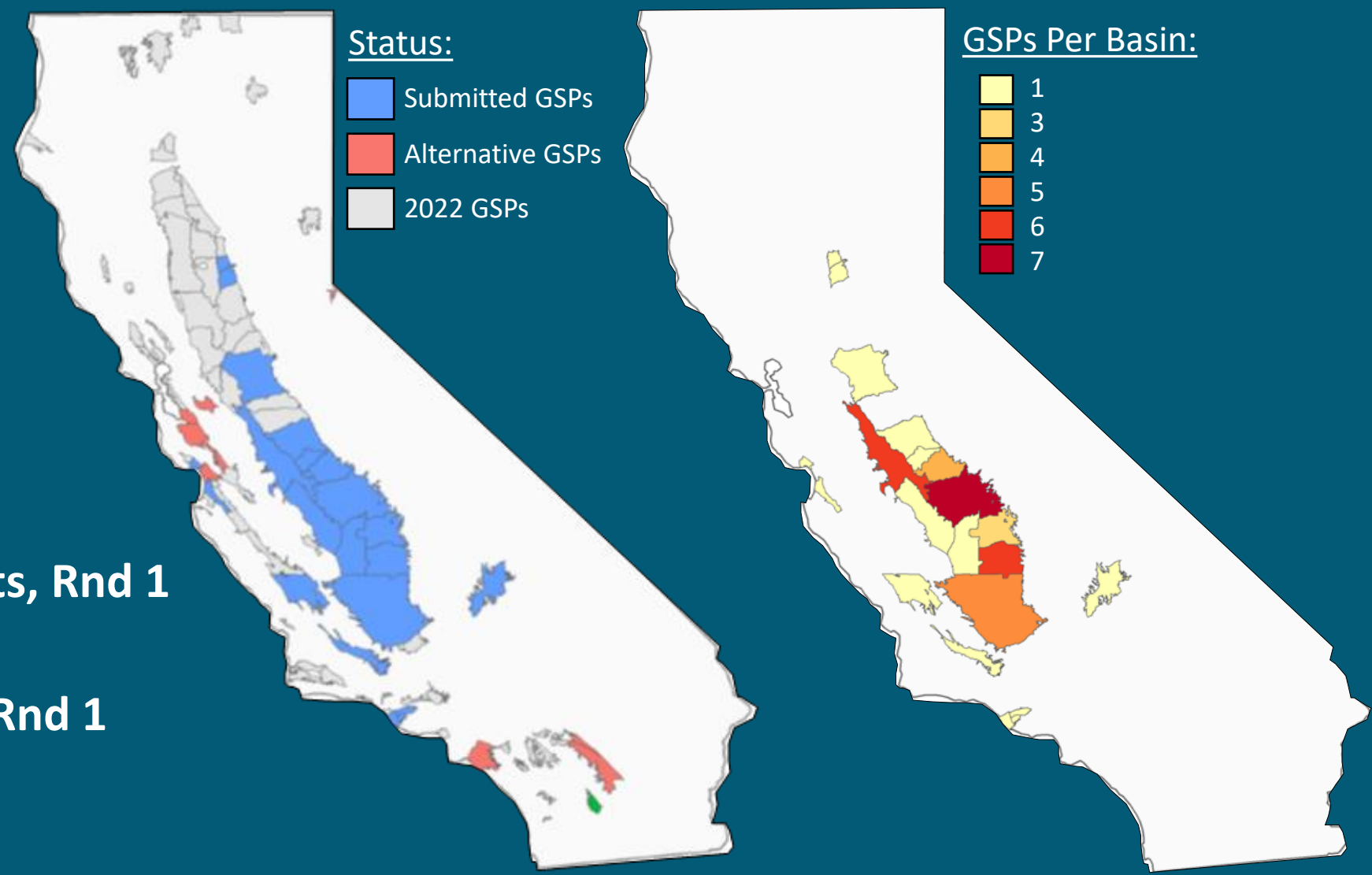
- 2012** 2012-2016 Drought
- 2014** SGMA signed into law
- 2017** Agency Formation

>250  
Groundwater Sustainability  
Agencies Formed by June 30, 2017



# SGMA Timeline

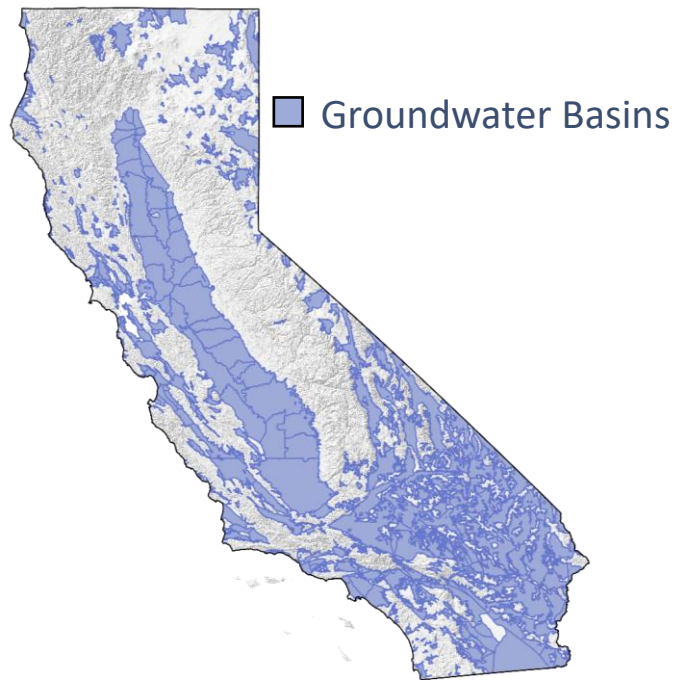
- 2012** 2012-2016 Drought
- 2014** SGMA signed into law
- 2017** Agency Formation
- 2020** GSP Submittals, Rnd 1
- 2021** Initial GSP Assessments, Rnd 1
- 2022** All GSP Assessments, Rnd 1  
GSP Submittals, Rnd 2



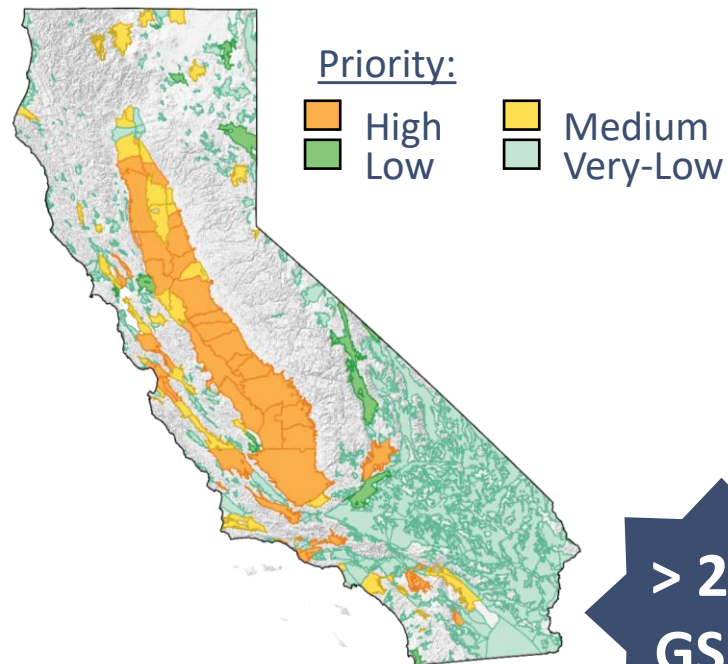


# Where Does SGMA Apply?

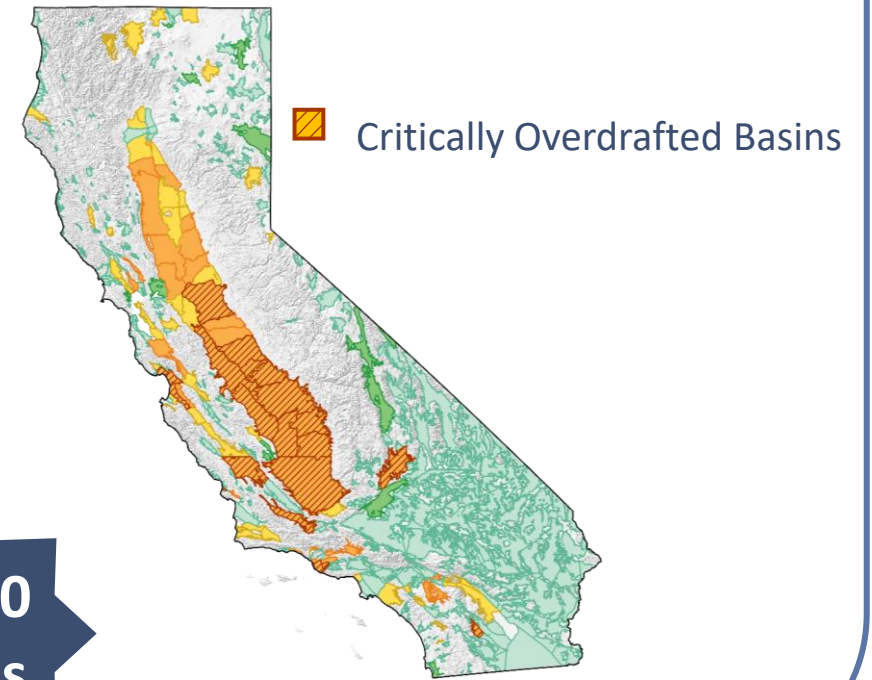
**515** Basins



**94** High and Medium Priority Basins



**21** Critically Overdrafted Basins



> 250  
GSAs

Formed by June 30, 2017

# GSP & Alternative Periodic Evaluation Submittals

- Critically Overdrafted Basin GSPs were submitted by January 31, 2020
  - **21 basins/46 GSPs**
- High and Medium Priority GSPs were submitted by January 31, 2022
  - **63 basins/65 GSPs**
- **9 Alternative Periodic Evaluations** were submitted by January 1, 2022 (*updated plans are submitted to DWR every 5 years for review*)

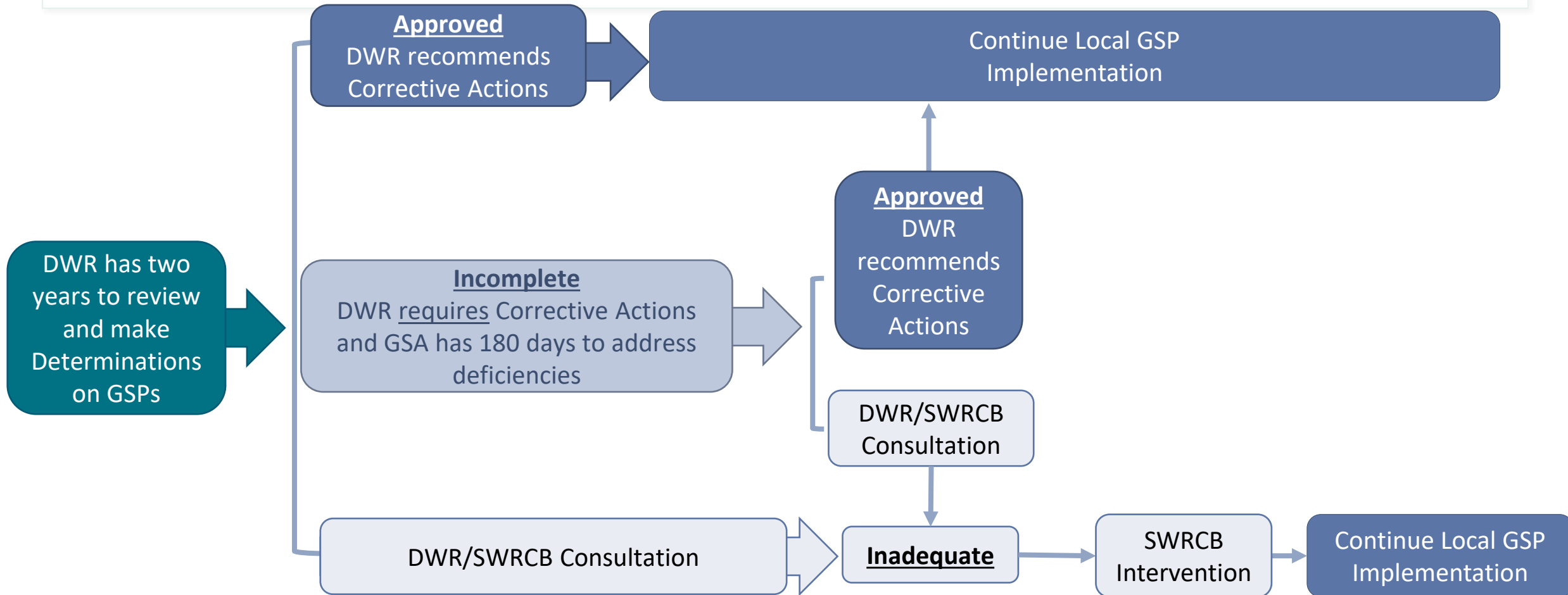
*Please visit the SGMA Portal to find submitted Plans,  
Public Comments, and DWR Assessments:*

<https://sgma.water.ca.gov/portal/>





# SGMA Regulatory Pathways



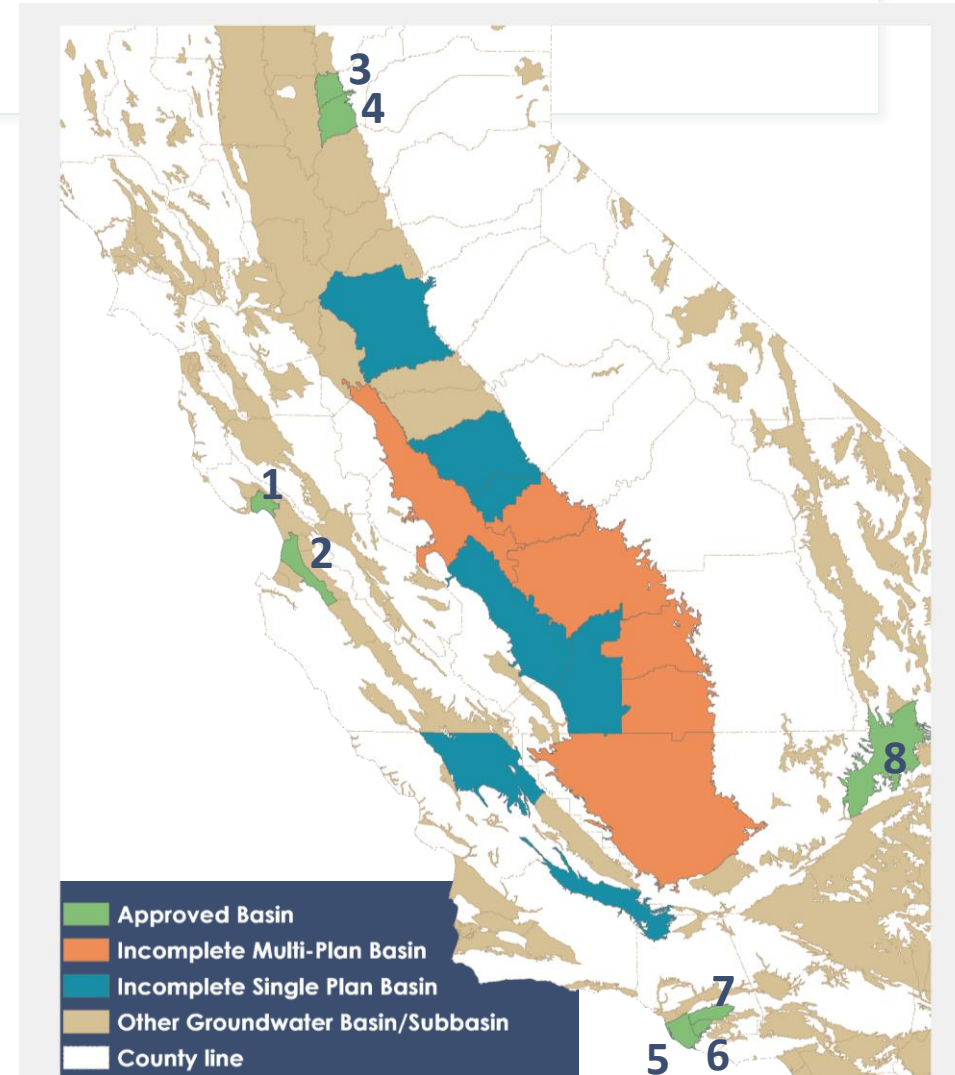
# Groundwater Sustainability Plans Determinations

8  
out of  
21

Basins

## Approved Basins:

1. Santa Cruz Mid-County Basin
2. 180/400 Foot Aquifer Subbasin
3. North Yuba Subbasin
4. South Yuba Subbasin
5. Oxnard Basin
6. Pleasant Valley Subbasin
7. Las Posas Basin
8. Indian Wells Valley Basin





# Groundwater Sustainability Plans Determinations

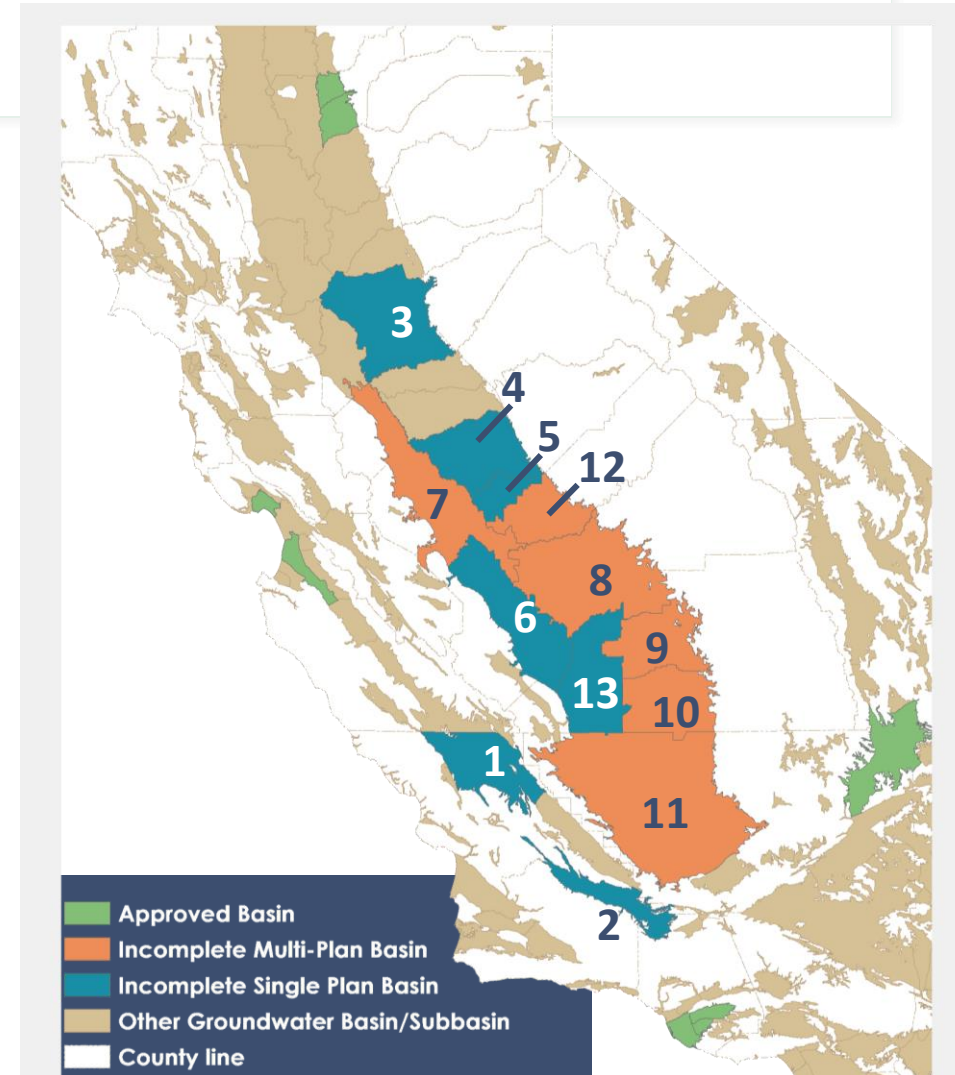
**13**  
**out of**  
**21**  
**Basins**

## Incomplete Basins:

1. Paso Robles Subbasin
2. Cuyama Valley Basin
3. Eastern San Joaquin Subbasin
4. Merced Subbasin
5. Chowchilla Subbasin
6. Westside Subbasin
7. Delta Mendota Subbasin
8. Kings Subbasin
9. Kaweah Subbasin
10. Tule Subbasin
11. Kern Subbasin
12. Madera Subbasin

## Inadequate Basin:

13. Tulare Lake Subbasin



# Themes of Incomplete GSPs

- Additional analysis and justification of how **Sustainable Management Criteria** were developed or will need to be developed further
- Did not considered all **Beneficial Groundwater Users and Uses**
- Some **multi-plan basins** did not coordinate and address **inconsistencies in their data and methodologies**

Subsidence

Water quality

Groundwater Levels and  
Drinking water impacts

Depletion of Interconnected  
surface water

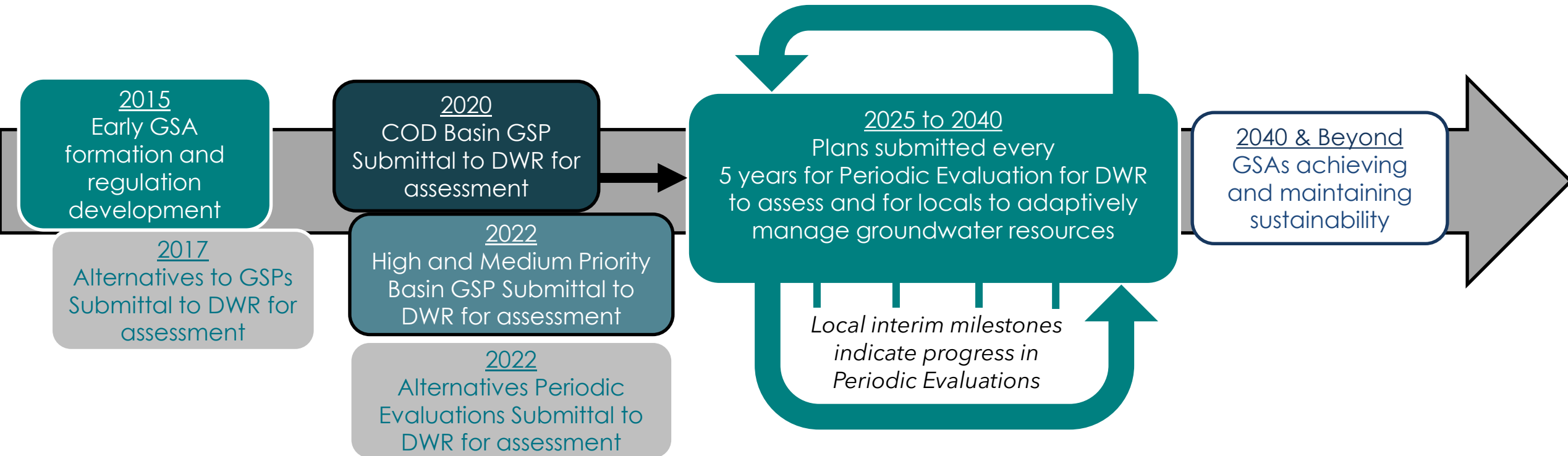
Lack of coordination among GSPs  
Inconsistent data and methodology





# SGMA Implementation

# SGMA Implementation: 20 Year Horizon





# DWR Groundwater Assistance



# Sustainable Groundwater Management Assistance

## ***Financial Assistance***

- \$400M (2021 & 2022)
- Round 1 Awarded May 2022
  - \$150M for COD Basins (~\$7.6M per basin)
- Round 2 Closed November 30, 2022
  - ~\$250M available for award to all High/Medium Priority Basins
  - Includes \$10M for Small Farm Technical Assistance

## ***Technical Assistance***

- Monitoring well installation
- Data Platforms including:
  - CalGW Live:
  - Reported dry wells
  - Dry well susceptibility
  - Quarterly land subsidence

## ***Planning Assistance***

- Facilitation Services
- Translation Services
- Best Management Practices and Guidance Documents
- Staff Basin Points-of-Contact

# Next Steps:

## Groundwater Sustainability Plan Implementation

- **Addressing Groundwater Sustainability Plan Corrective Actions**
  - Preparing for Periodic Evaluation (next plan update)
- **Filling Data Gaps & Improvements**
  - Modeling, Monitoring, and Water Budgets
- **Building Local Agency Capacity**
  - Local Funding Challenges/Stability
- **Advancing Projects and Management Actions**
  - Supply Augmentation including Groundwater Recharge
  - Demand Reduction including Allocations and Groundwater Trading



*Ribbon cutting ceremony held by the Fresno Irrigation District for the Savory Pond Expansion project funded by DWR in Fresno, California*



# Statewide Initiatives: Supporting Local Projects & Actions

## Demand Reduction

- **Coming soon – LandFlex Program:**  
Drought agricultural program with funding for transitional waters (expediting allocations)
- **California Water Commission White Paper on Groundwater Trading:**  
Considering vulnerable users in local trading programs
- **Open ET Initiative & Water Accounting Platform**

## Supply Augmentation

- **Water Supply Strategy: DWR Regulatory Assistance on 180-day Temporary, Streamlined Water Rights Permits**
- **Executive Order 13: CEQA Suspension for Local Recharge Projects**



# Additional State Resources

## ***Department of Water Resources (DWR)***

- *LandFlex Program (Coming Soon)*

## ***Department of Conservation (DOC)***

- *Multi-Benefit Land Repurposing Program (MLRP)*
- *Sustainable Agricultural Lands Conservation Program (SALC)*

## ***California Department of Food and Agriculture (CDFA)***

- *State Water Efficiency & Enhancement Program*
- *Healthy Soils Initiative*

## ***Governor's Office of Business and Economic Development (GO-Biz)***

- *Community and economic transition resources, contact [sgmps@water.ca.gov](mailto:sgmps@water.ca.gov) if interested*



# Thank You

- For more information, please contact [SGMPS@water.ca.gov](mailto:SGMPS@water.ca.gov)

